



GENTILE
HOLLOWAY
O'MAHONEY
& ASSOCIATES, INC.
Landscape Architects
Planners and Environmental
Consultants • LC-0000177

George G. Gentile, FASLA
M. Troy Holloway, ASLA
Emily O'Mahoney, ASLA

October 27, 2010

Louis Vilardo, President
Juno Isles Civic Association
1901 Tudor Rd.
Juno Isles, FL 33408

RE: Juno Isles accent pavement treatment on Ellison Wilson Rd.

Dear Mr. Vilardo:

Pursuant to the community meeting on October 20, 2010 and at your request, we have prepared the attached proposal for roadway improvement on Ellison Wilson Rd. within the Juno Isles Subdivision. The plan graphics indicate the location and dimension of the improvements. This proposal will include the installation of either concrete pavers or stamped/colored concrete per the approval of P.B.C. Engineering. The pattern and color will match as close as possible to the asphalt treatment within the Juno Isles Subdivision (See attached photos). As requested, we have also provided a graphic to show the previously approved northern landscape island.

Please review the attached material and contact us with your feedback. It is our understanding that the Juno Isles Civic Association will vote on either the north island or pavement accent at your meeting on November 1st, 2010. Do not hesitate to contact our office with any questions or comments.

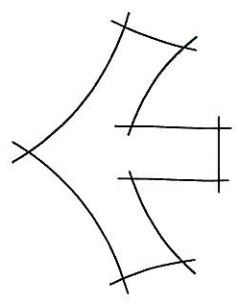
Sincerely,

Daniel S. Siemsen, ASLA
Design Associate

cc: Donald Barnes

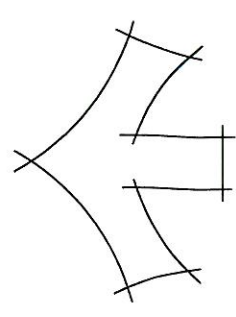


Ellison Wilson Road Paver Improvements Juno Isles, Florida

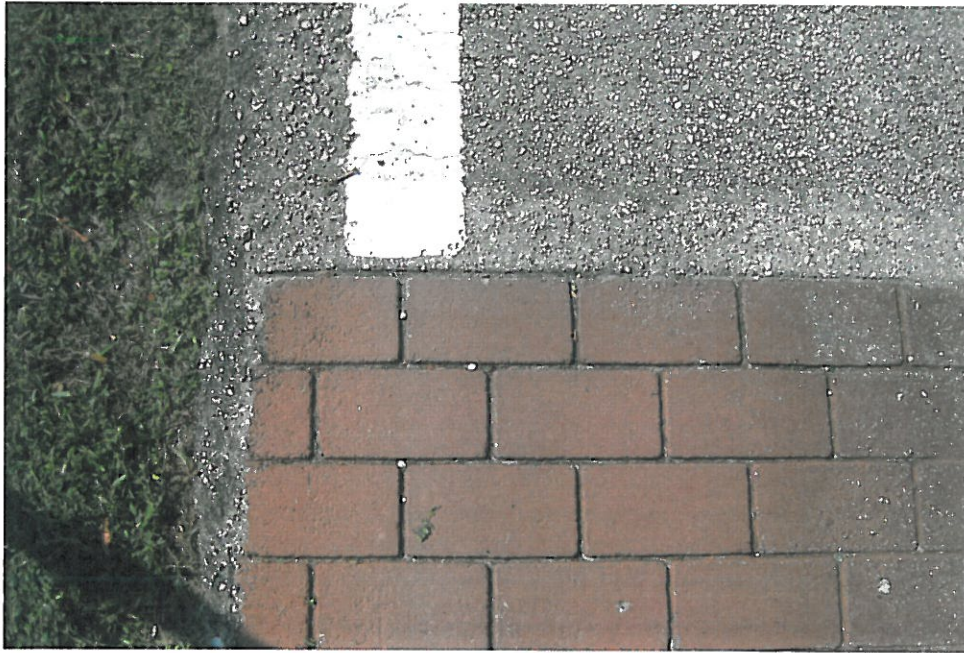




Ellison Wilson Road Paver Improvements Juno Isles, Florida



JUNO ISLES SUBDIVISION EXISTING ASPHALT TREATMENT





MATCH LINE STATION 105+00



MATCH LINE STATION 105+00

Ellison Wilson Road Improvements

Juno Isles, Florida

