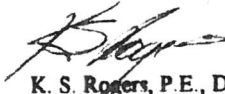


7. The Permittee, any successors, legal heirs or assigns, shall indemnify and hold Palm Beach County harmless from any and all claims, liability, losses and causes of action which may arise out of performance of this Permit. The Permittee, any successors, legal heirs or assigns shall pay all claims and losses of any nature whatsoever in connection herewith, and shall defend all suits in the name of Palm Beach County where applicable, and shall pay all costs of judgements which may arise thereon.
8. The Permittee, any successors, legal heirs or assigns shall, at its expense, promptly correct any failure of the landscaping within the right-of-way of the subject road. If in the Office of the County Engineer's opinion the landscaping caused or contributed to the damage or failure of any part of the subject road, the Permittee, any successors, legal heirs or assigns, shall in such case also at their expense, repair the damage or failure sustained by the subject road within 48 hours of notification from the Office of the County Engineer. In the event that the Permittee, any successors, legal heirs or assigns fail to repair said damage or failure within the 48 hour period, Palm Beach County shall have the right to make any and all repairs, and in the event Palm Beach County should exercise and give effect to such right, the Permittee, any successors, legal heirs or assigns, shall be liable to pay and indemnify Palm Beach County upon completion of said repairs. The total cost may include engineering and legal fees.
9. The Office of the County Engineer shall be the sole and final authority as to the placement of landscaping and the quality and quantities of materials used in the installation. Adjustments to the landscaping may be required as deemed necessary by the Office of the County Engineer.
10. In the event of widening, repair, or reconstruction of the subject road, the Permittee, any successors, legal heirs or assigns, shall upon request and within 30 days after notice by the Office of the County Engineer, remove or relocate the landscaping within the right-of-way of the subject road at no expense to Palm Beach County.
11. If the landscaping is not removed or relocated pursuant to Sections 6 and 10 of this Permit, Palm Beach County shall have the right to remove or relocate said landscaping, and the Permittee agrees to pay all costs thereby incurred by Palm Beach County.
12. The permittee shall be responsible for coordinating the installation of the landscaping with existing utilities. Should damage occur to the utility during installation or in the future due to the landscaping, the permittee shall be responsible for repair costs.
13. **TRAFFIC CONTROL** - The Permittee or Permittee's representative shall meet with Palm Beach County Traffic Division (Ed McClane) at (561) 684-4030 48 hours prior to commencement of work. Traffic control operations for installation and future maintenance shall be in accordance with the current Florida Department of Transportation "Standard Specifications for Road and Bridge Construction", Index 600 of "Roadway and Traffic Design Standards", and Part VI of the U.S. Department of Transportation "Manual on Uniform Traffic Control Devices".

There shall be no obstruction of the travel lanes Monday thru Friday between 7 a.m. to 9 a.m. and 3 p.m. to 6 p.m. with the exception of local and subdivision roads. No time restriction for Saturday or Sunday construction, which must be approved by the Construction Coordination Division 48 hours in advance of Saturday.

14. **REVIEW OF WORK** - Contact the Construction Coordination Division at (561) 684-4180 and the Traffic Division (Andy Hertel) at (561) 684-4030, 48 hours before commencement of work. If proper contact of the two Divisions indicated has been made and the work begins 48 hours prior to the expiration date indicated on the front of this permit the work may proceed beyond the expiration date but shall be completed in a timely manner. The two Divisions indicated may establish points of work that require review. When the work is complete, the permittee's landscape architect shall submit to the Land Development Division a signed and sealed certification indicating the landscaping was installed in substantial accordance with the permitted plans, and request final review of the work by the Construction Coordination and Traffic Divisions. The permittee will be notified of the final review results by the Land Development Division.

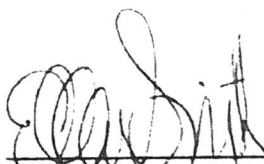
Very truly yours,



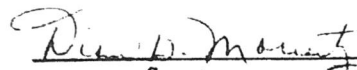
K. S. Rogers, P.E., Director  
Land Development Division

KSR:JEP:lr

**CONDITIONS ACCEPTED:**

BY:   
Authorized signature for Homeowners  
Association or Corporation  
(signature)

ATTESTED TO BY:

  
Secretary  
(Affix seal)

Ellen Smith  
Please Print or Type Name

Copy: Construction Coordination Division - w/plans  
James Snelgrove, Director - Road and Bridge Division w/plans  
Andy Hertel - Traffic Division w/plans  
Ed McClane - Traffic Division  
Permittee w/plans

Ref: LA00124.per

THIS CONTRACT PLAN SET INCLUDES:

# LANDSCAPE DEVELOPMENT PLANS

FOR:

PALM BEACH COUNTY ROADWAY

## ELLISON-WILSON ROAD

FOR THE: JUNO ISLES CIVIC ASSOCIATION

SEP 04 1996

RIGHT OF WAY CONSTRUCTION (GUARANTEED)  
CALL 694-4100 FOR PRE-CONSTRUCTION  
AND FINAL REVIEW.  
FOR COUNTY ENGINEER

DATE: SEPTEMBER 4, 1996	
REVISIONS	
DATE	DATE

RECEIVED  
SEP 04 1996

PLANS PREPARED BY:



675 W. Washington Road  
Suite 201  
Aptos, Florida 32908  
904-735-5087  
904-735-5080 FAX

CAD004465

THESE PLANS HAVE BEEN PREPARED IN ACCORDANCE WITH AND ARE GOVERNED BY THE DESIGN STANDARDS SPECIFICATIONS FOR TRANSPORTATION ROADWAY AND TRAFFIC DESIGN STANDARDS BOOKLET DATED JANUARY, 1994 AND THE PALM BEACH COUNTY STREETSCAPE STANDARDS MANUAL DATED MARCH 1994.

THE CONTRACTOR SHALL BE RESPONSIBLE FOR ALL CONFLICTS WITH THE LOCATIONS TO THE ADJACENT LANDSCAPE ARCHITECT, WHO SHALL COORDINATE THE NECESSARY ADJUSTMENTS WITH THE OFFICE OF THE PALM BEACH COUNTY ENGINEER. FIELD ADJUSTMENTS ARE TO BE EXPECTED TO INSURE THAT ALL LIMITS OF CLEAR SIGHT LINES ARE ADHERED TO.

### INDEX OF DRAWINGS

INDEX SHEET	
L-1 - L-3	LANDSCAPE DEVELOPMENT PLANS
L-4	PLANT LIST & QUANTITIES
L-5	PLANTING DETAILS
L-6	PLANTING SPECIFICATIONS

ALL LANDSCAPING AND ABOVE GROUND STRUCTURES SHOWN HEREON ARE DESIGNED AND ARE TO BE MAINTAINED IN ACCORDANCE WITH THE PALM BEACH COUNTY STREETSCAPE STANDARD MANUAL WITH REGARD TO SAFE SIGHT DISTANCE AND ROADSIDE CLEAR ZONES

# SEMINOLE GOLF CLUB PROPERTY

TREE NOT WITHIN SAFE SIGHT CORNER, 6' CANOPY HEIGHT, TYP.

SEP 04 1996

EXISTING NATIVE VEGETATION

OVERHEAD POWER LINE

EXISTING COCONUTS TO REMAIN

SAFE SIGHT DISTANCE, TYP.

BELLSOUTH TELEPHONE CABLE

ROW

SIDEWALK

## ELLISON-WILSON ROAD

RELOCATED SPEED LIMIT SIGN

ROW

END OF PROJECT

360' SAFE SIGHT DISTANCE LINE

EXISTING NATIVE VEGETATION

EXISTING SLASH PINE TO REMAIN

EXISTING HOUSE TYP.

TREE WITHIN SAFE SIGHT CORNER, 8' CANOPY HEIGHT, TYP.

25' X 25' SAFE SIGHT CORNER

SAFE SIGHT DISTANCE, TYP.

OVERHEAD POWER LINE

SIDEWALK

## ASCOTT ROAD

## ASCOTT ROAD

MATCHLINE SEE SHEET L-2

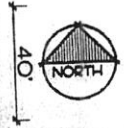


**GEORGE A. GENTILE, INC.**  
Landscape Architects  
1111 S. W. 11th St., Suite 201  
Fort Lauderdale, FL 33304  
Tel: 305-555-1111 Fax: 305-555-1112

DATE	BY	DESCRIPTION	DATE	BY	DESCRIPTION
SEPTEMBER 4, 1996	MTH				

## ELLISON-WILSON ROAD LANDSCAPE DEVELOPMENT PLAN

L-1





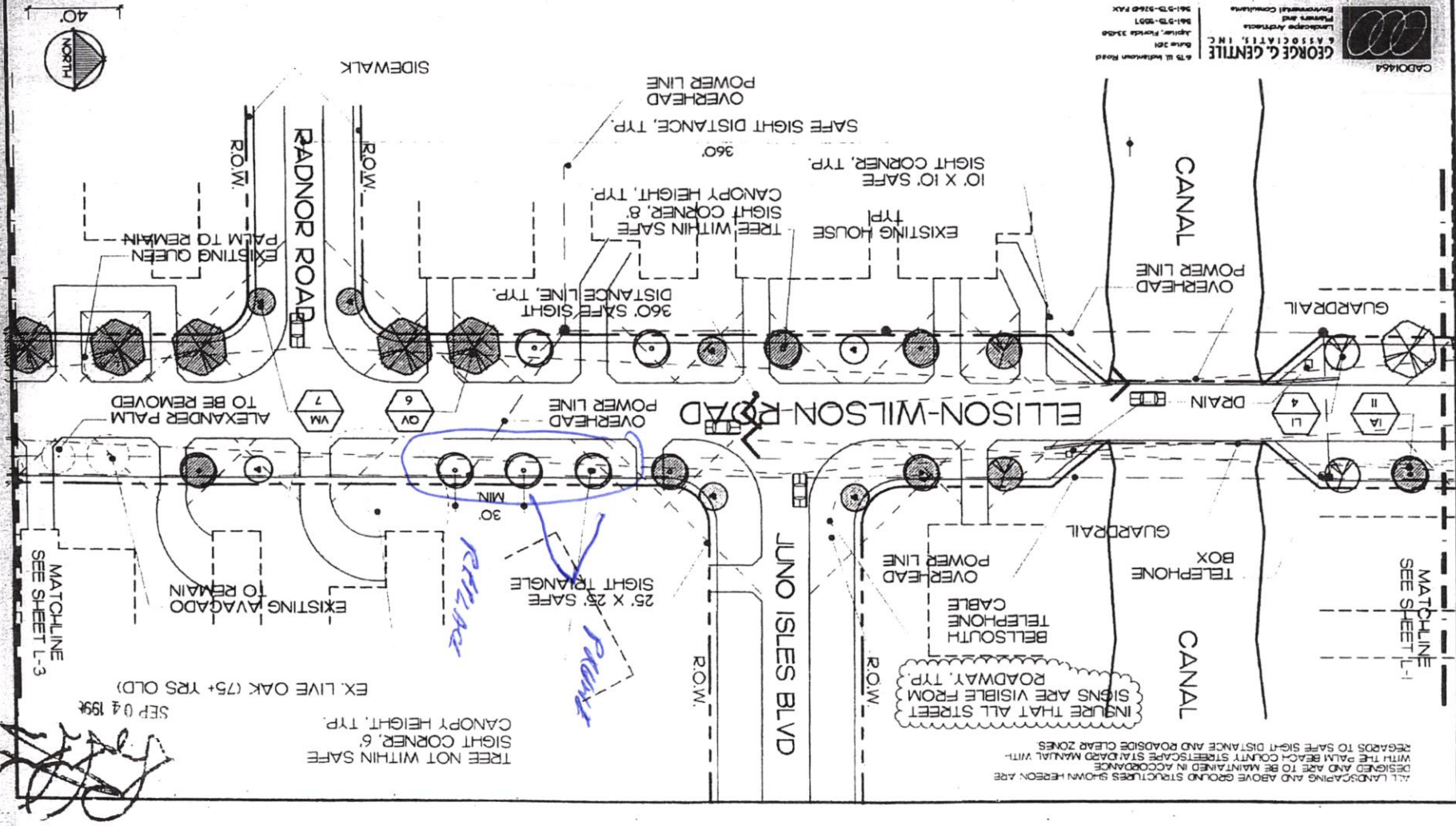
**GEORGE C. GENTILE & ASSOCIATES, INC.**  
Landscape Architects  
Planners and  
Environmental Consultants

675 W. Indianwood Road  
Suite 201  
Aptler, Florida 33508  
861-573-3507  
861-573-0760 FAX

[illegible]

ELISON-WILSON ROAD  
LANDSCAPE DEVELOPMENT PLAN

2-7





# PLANT LIST

SEP 04 1996

BID ITEM NO.	KEY	QTY	BOTANICAL NAME	COMMON NAME	SIZE	SPACING	REMARKS
	OV	15	QUERCUS VIRGINIANA	LIVE OAK, #65	14' O.A. X 7' SPD.	AS	FULL & THICK, TREE FORM, 8' C.T.
	VM	13	VEITCHIA MERRILLII	CHRISTMAS PALM	8' C.T. MIN.	AS	FULL HEADS
	IA	19	ILEX ATTENUATA	EAST PALATKA HOLLY, #65	13-14' O.A. X 6' SPD.	AS	FULL & THICK, 8' C.T.
	LI	2	LAGERSTROEMIA INDICA	GRAPE MYRTLE, #65	14' O.A. X 7' SPD.	AS	FULL & THICK, 8' C.T.
TREES & PALMS NOT LOCATED WITHIN SIGHT CORNERS							
	OV	6	QUERCUS VIRGINIANA	LIVE OAK, #30	12' O.A. X 4-5' SPD.	AS	FULL & THICK, TREE FORM, 6' C.T.
	VM	2	VEITCHIA MERRILLII	CHRISTMAS PALM	6' C.T. MIN.	AS	FULL HEADS
	IA	13	ILEX ATTENUATA	EAST PALATKA HOLLY, #35	10' O.A. X 4' SPD.	AS	FULL & THICK, 6' C.T.
	LI	6	LAGERSTROEMIA INDICA	GRAPE MYRTLE, #35	12' O.A. X 5' SPD.	AS	FULL & THICK, 6' C.T.

BID ITEM NO.	MISCELLANEOUS	QTY	REMARKS
	SUNSOIL	4 C.Y.	2-3' TREASURE COAST SUNSOIL OR APPROVED EQUAL TILLED INTO ALL PLANTING BEDS
	MULCH	4 C.Y.	3" SHREDED CYPRESS MULCH SHALL BE APPLIED TO ALL PLANTING AREAS
	WATER		ALL PLANTINGS SHALL BE HAND WATERED FOR A PERIOD OF THIRTY (30) DAYS, NO WATER SOURCE AVAILABLE

## NOTES:

THE LOCATIONS OF PLANTS, AS SHOWN IN THESE PLANS, ARE APPROXIMATE. THE FINAL LOCATIONS MAY NEED TO BE ADJUSTED TO ACCOMMODATE UNFORESEEN FIELD CONDITIONS, TO COMPLY WITH SAFETY SETBACK CRITERIA, TO AVOID CREATING UNSAFE SIGHT CONDITIONS, OR AS OTHERWISE DIRECTED OR APPROVED BY THE LANDSCAPE ARCHITECT OR PALM BEACH COUNTY.

UNIT COSTS FOR EACH PLANT AS ABOVE SPECIFIED SHALL INCLUDE THE COSTS OF SOIL MIX, TERRA-SORB, BACKFILL MIX & ANY OTHER ITEMS &/OR REQUIREMENTS AS SPECIFIED IN THE WRITTEN CONTRACT DOCUMENTS & NOT LISTED ABOVE.

\* IN THE EVENT THAT THE VEITCHIA MERRILLII IS NOT AVAILABLE IN THE SIZE AS SPECIFIED, THE CONTRACTOR SHALL PROVIDE THE VEITCHIA MONTGOMERYANA, MONTGOMERY PALM, MEETING THE SAME SPECS AS ABOVE WRITTEN. THE LANDSCAPE ARCHITECT AND/OR PALM BEACH COUNTY SHALL BE NOTIFIED PRIOR TO THE CHANGE. MONTGOMERY PALMS SHALL BE SET BACK A MIN. OF 12' FROM ALL OVERHEAD POWERLINES.

ALL LANDSCAPING AND ABOVE GROUND STRUCTURES SHOWN HEREON ARE DESIGNED AND ARE TO BE MAINTAINED IN ACCORDANCE WITH THE PALM BEACH COUNTY STREETSCAPE STANDARD MANUAL WITH REGARDS TO SAFE SIGHT DISTANCE AND ROADSIDE CLEAR ZONES.

DATE SEPTEMBER 4, 1996	BY MTH	IN CHARGE [Signature]	DATE [Blank]	BY [Blank]	REVISION [Blank]	DATE [Blank]	BY [Blank]
---------------------------	-----------	--------------------------	-----------------	---------------	---------------------	-----------------	---------------

**PLANT LIST AND QUANTITIES**

ELLISON-WILSON ROAD

L-4

CA001466

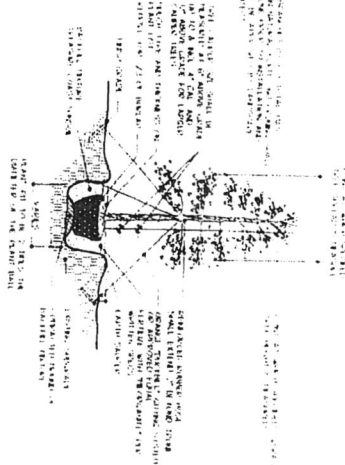


**GEORGE G. GENTILE & ASSOCIATES, INC.**  
Landscape Architects  
Planners and Environmental Consultants

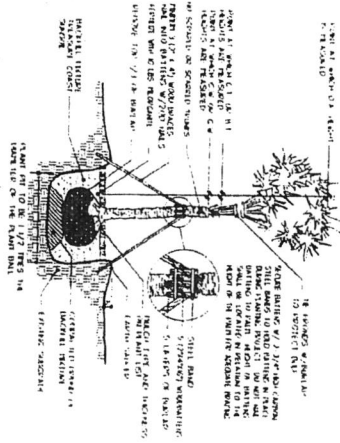
1075 W. Holliston Road  
Suite 201  
Boca Raton, FL 33486  
Tel: 561-993-0001  
Tel: 561-993-0000 FAX



# TREE PLANTING DETAIL



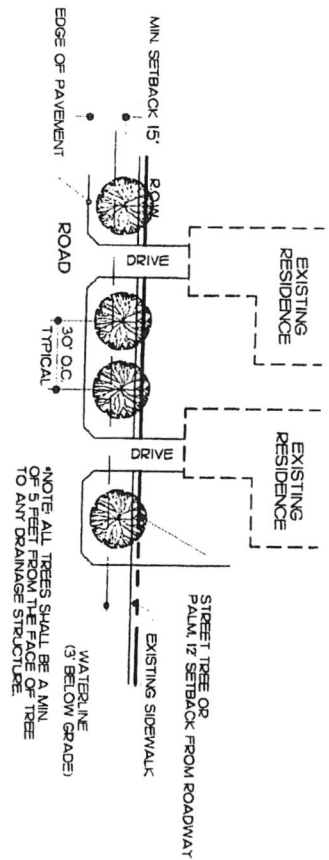
# PALM PLANTING DETAIL



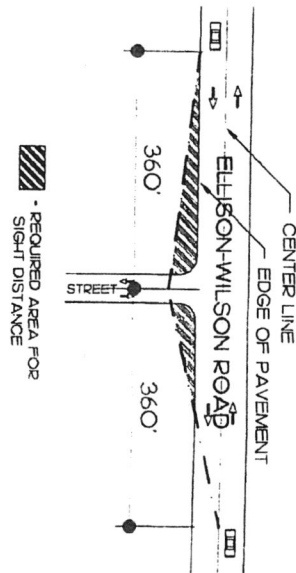
CAD001467  
**GEORGE C. GENTILE**  
 Landscape Architect  
 Planning and  
 Development Consultants  
 675 N. Hollywood Blvd.  
 Suite 200  
 Apopka, Florida 32706  
 407-578-3951  
 407-578-3240 FAX

DATE	BY	DESCRIPTION	DATE	BY	DESCRIPTION
SEPTEMBER 4, 1996	MTM				

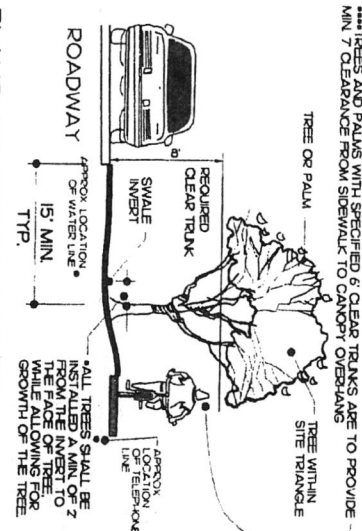
# TREE PLACEMENT DETAIL



# SAFE SIGHT DISTANCE DETAIL



# PLANTINGS WITHIN SIGHT TRIANGLES



# ELLISON-WILSON ROAD PLANTING DETAILS

SEP 04 1996



[illegible]

THE GIVEN PARTS SHALL BE FILLED IN ACCORDANCE WITH THE AND SHALL CONFORM TO THE FOLLOWING STANDARDS LISTED ABOVE.

WARRANTY AGAINST PLANT MATERIAL FOR A PERIOD OF SEVENTEEN (17) MONTHS FROM THE DATE OF PLANTING. PLANT MATERIAL SHALL BE GUARANTEED TO BE IN GOOD HEALTH AND GROWING IN GOOD CONDITION, EXCEPT AS MY REASONABLE FORTUNE BE DICTATED BY OWNED, DAMAGE BY OTHERS AND UNUSUAL WEATHER OR PESTICIDE BEYOND COVERAGE. CONTRACTORS' CONTRACTS SHALL ALTERNATELY BE PROTECTED OR ACCEPTABLE BY THE OWNER OF LANDSCAPE ARCHITECT. PLANT MATERIAL PLANTED DURING THE COURSE OF CONSTRUCTION SHALL BE COVERED BY THE FINAL CONTRACT. PLANT MATERIAL NOT PLANTED DURING THE COURSE OF CONSTRUCTION SHALL BE COVERED BY THE FINAL CONTRACT. NO LATER THAN 90 DAYS FROM THE DATE OF FINAL ACCEPTANCE, THE CONTRACTOR SHALL BE RESPONSIBLE FOR THE PROTECTION OF PLANT MATERIAL. PLANT MATERIAL SHALL BE PROTECTED BY THE LANDSCAPE CONTRACTOR.

[illegible]

PROVIDE FERTILIZED UNOPEN IN COMPOSITION, DRY, AND IN A FREE FLOWING CONDITION FOR APPLICATION BY SUITABLE EQUIPMENT, AND DELIVER IN UNOPENED BAGS OR CONTAINERS, EACH FULLY LABELED

FERTILIZE TREES, SHRUBS AND GRASS COVERS WITH THE ORGACARE<sup>®</sup> OR AN APPROVED COMPLETE FERTILIZER. APPLY THE ORGACARE<sup>®</sup> IN A CIRCLE AROUND THE PLANT BEFORE THE GRASS DOES NOT TOUCH THE PLANT WITH THE FERTILIZER. WATER IN FERTILIZER AFTER THE ORGACARE<sup>®</sup> FERTILIZER AT THE FOLLOWING RATE:

5.00 LBS. OR 14.5 CUPS / PAINTS  
3.00 LBS. OR 8.10 CUPS / 12-16" MATERIAL  
2.00 LBS. OR 5.80 CUPS / 8-12" MATERIAL  
0.69 LBS OR 2.00 CUPS / 6-8" MATERIAL  
0.19 LBS OR 1/2 CUP / 3 CAL. MATERIAL  
0.10 LBS OR 1/4 CUP / 1 CAL MATERIAL.

SUPR. ABSORBENT POLYMER. "TERRA SORB" OR APPROVED EQUAL AS PACTACULIN 3.0Z. HANDY PAC COMPOSED OF SYNTHETIC ACRYLATE COPOLYMER, POTASSIUM ACRYLATE. PARTICLE SIZE OF 1.0 MM TO 3.0 MM AND ABSORPTION RATE OF 300 TIMES ITS WEIGHT IN WATER. APPLY DRY, USING THE FOLLOWING AMOUNTS:

1 PAC / 1PET - 36" BALL  
2 PACS / 1PET - OVER 36" BALL  
1 PAC / 20 GAL.  
5 PACS / 7-10 GAL  
0.25 PACS / 3 GAL.  
0.17 PACS / 1 GAL

SEPTEMBER 4, 1996	MTW
-------------------	-----

ELLISON-WILSON ROAD

五

CAD01466

**GEORGE G. GENTILE**  
LANDSCAPE ARCHITECTS, INC.  
Landscape Architects  
Planners and  
Environmental Consultants

675 W. Indianwood Road  
Suite 201  
Appl. Mat., Florida 33408  
561-575-3201  
561-575-5140 FAX

[illegible]

SEP 04 1996

